

REPAIR AND OVERHAUL INSTRUCTIONS

COCKPIT FLOORBOARD CUTOUTS FOR ANTI-ICER DRAIN LINES

PURPOSE

1 To eliminate damage to the floor due to excessive tightening of the union and locating nuts on the anti-icer system and to eliminate possible damage to anti-icer system piping due to insecure positioning.

189647-14 and the tube assemblies, 644-189647-6 and -10 at the floor.

(c) Manufacture plates, Figures 1 and 3 and install as shown in Figure 2.

(d) Reconnect piping. Relieve balsa underneath the floor board as required to facilitate proper reconnection of unions.

REPAIR SCHEME

2 To effect repairs, proceed as follows:-

(a) Remove pilot's seat.

(b) Disconnect pump supply line 644-

(e) Re-install pilot's seat.

3 This repair scheme originated from BAWL ER6051.

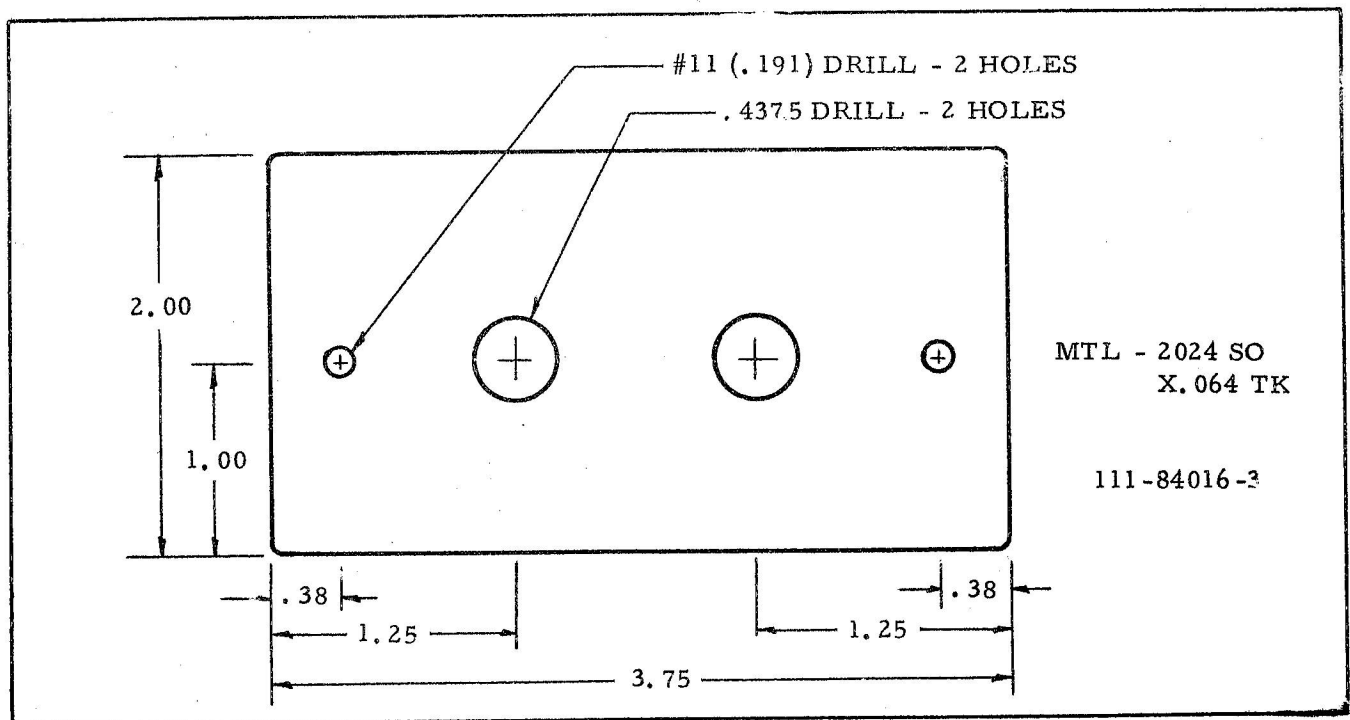


Figure 1

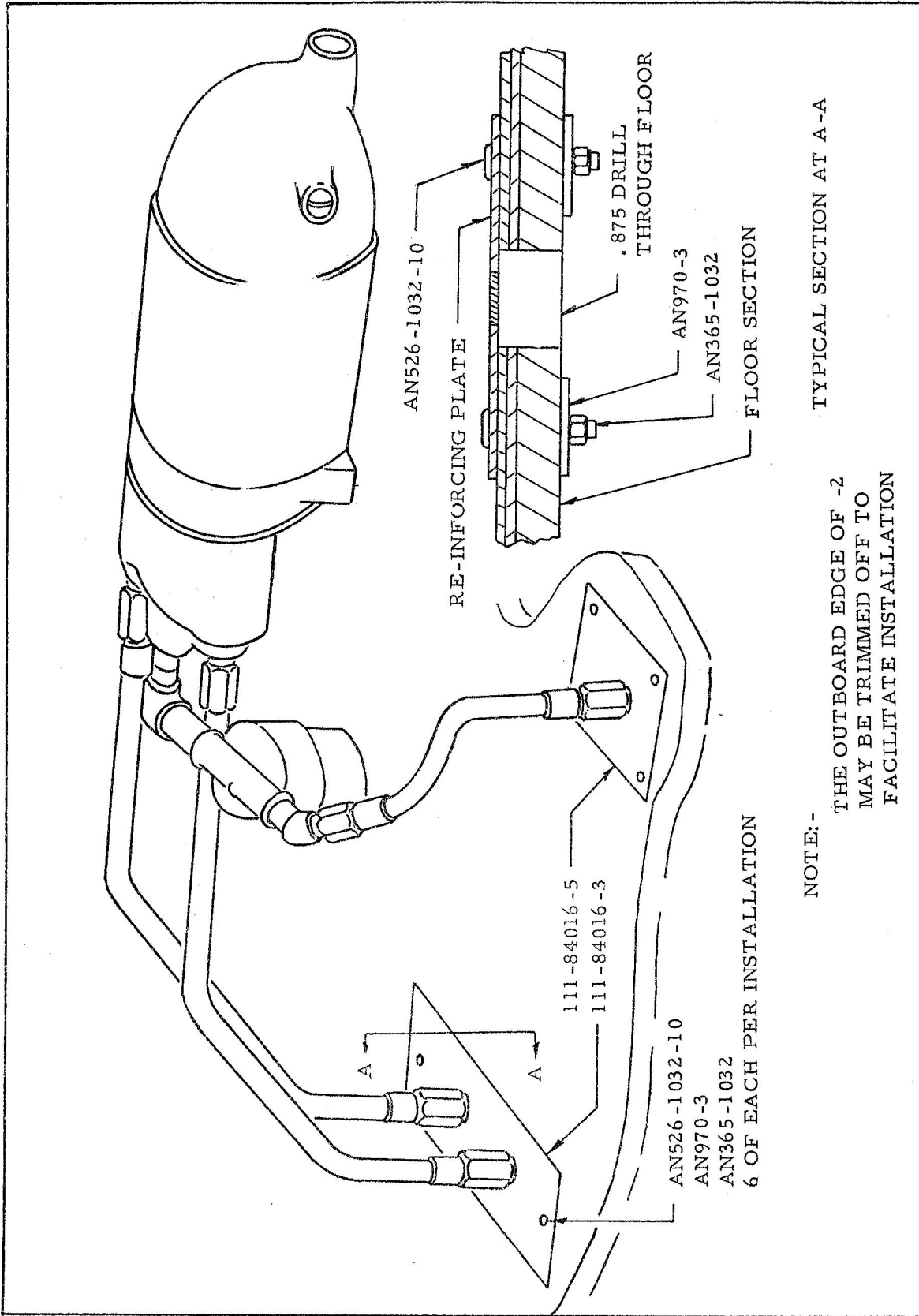


Figure 2

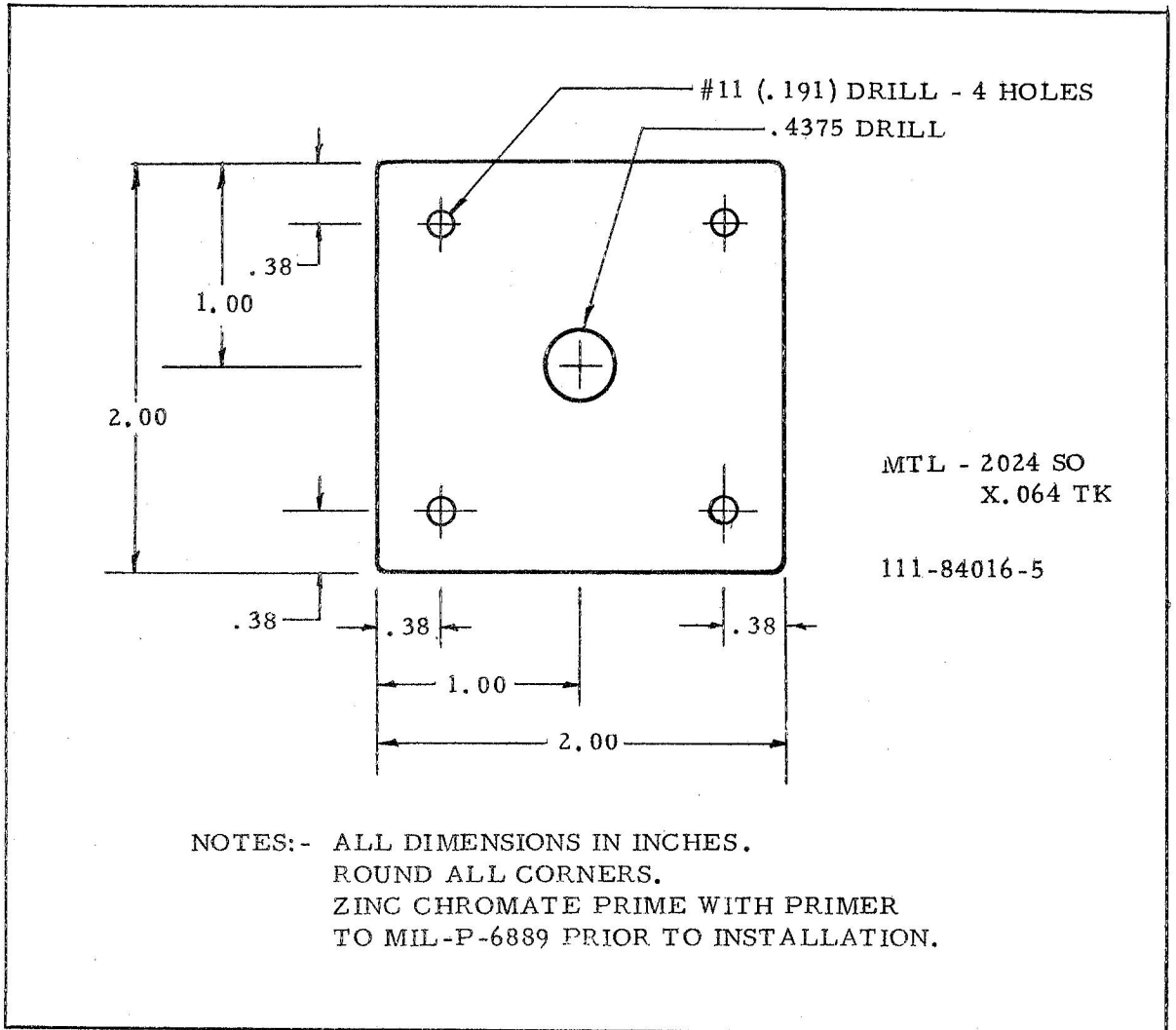


Figure 3

ISSUED ON AUTHORITY OF THE CHIEF OF THE AIR STAFF

Prepared By:
AMC/SACO/ACR

